

MONTHLY MEMBERSHIP PROGRESS REPORT

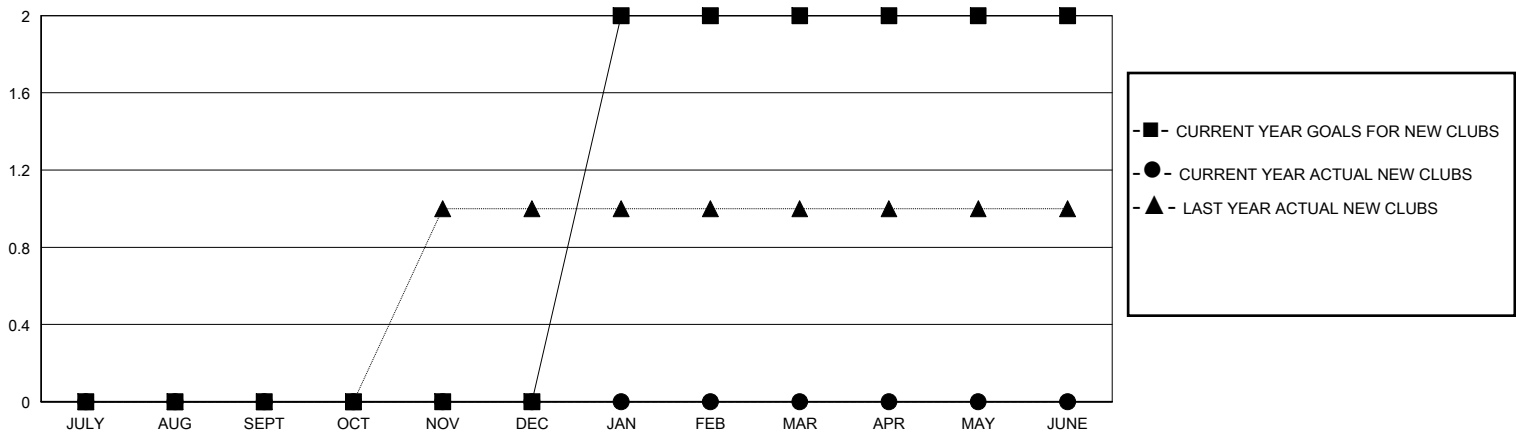
District 110AN

Results as of: 4/30/2025

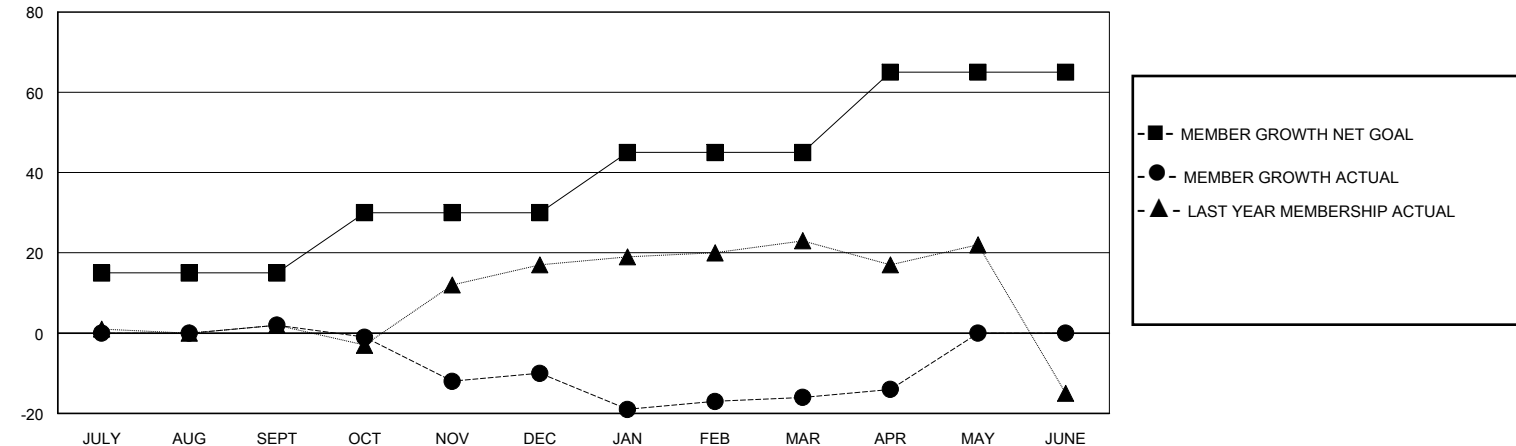
GMT: LOCATION NETHERLANDS GMT CA

| Clubs | | | | Members | | | |
|-----------------------|---------------|-----------|---------------|-----------------------|------------------------|----------------------|--|
| RESULTS FOR 2024-2025 | | | | RESULTS FOR 2024-2025 | | | |
| QUARTER | NEW CLUB GOAL | NEW CLUBS | DROPPED CLUBS | QUARTER | MEMBER GROWTH NET GOAL | MEMBER GROWTH ACTUAL | DROPPED MEMBERS ACTUAL (including transfers) |
| JULY/AUG/SEPT | 0 | 0 | 0 | JULY/AUG/SEPT | 15 | 21 | 18 |
| OCT/NOV/DEC | 0 | 0 | 0 | OCT/NOV/DEC | 15 | 34 | 40 |
| JAN/FEB/MAR | 2 | 0 | 0 | JAN/FEB/MAR | 15 | 25 | 18 |
| APR/MAY/JUNE | 0 | 0 | 0 | APR/MAY/JUNE | 20 | 6 | 2 |

GOALS AND ACTUAL NEW CLUBS CUMULATIVE



GOALS AND ACTUAL MEMBERS CUMULATIVE



| | | |
|--|---|--|
| DROPPED CLUBS: 0 | 26 CLUBS OF 58 ADDED 1 OR MORE NEW MEMBERS | <u>GENDER DISTRIBUTION</u> MALE 967 (83.22%) FEMALE 195 (16.78%) |
| <u>DROPPED MEMBERS</u> DECEASED 9 CLUB CANCELLED 0 OTHER 69 TOTAL 78 | CLICK HERE FOR CUMULATIVE MEMBERSHIP DATA | TOTAL FAMILY UNIT MEMBERS 0 FAMILY MEMBERS PAYING HALF DUES 0 |